

Community Power Outer Hebrides

Galson Trust

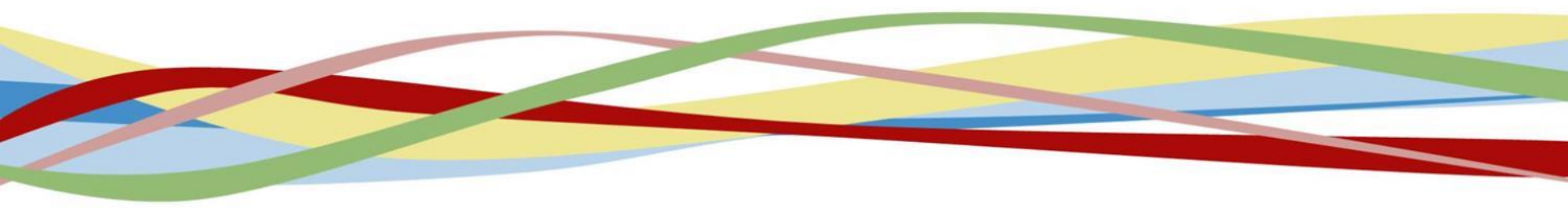
Point and Sandwick Dev Limited

Barra & Vatersay Community Ltd

Horshader Community

Development

Tolsta Community Development

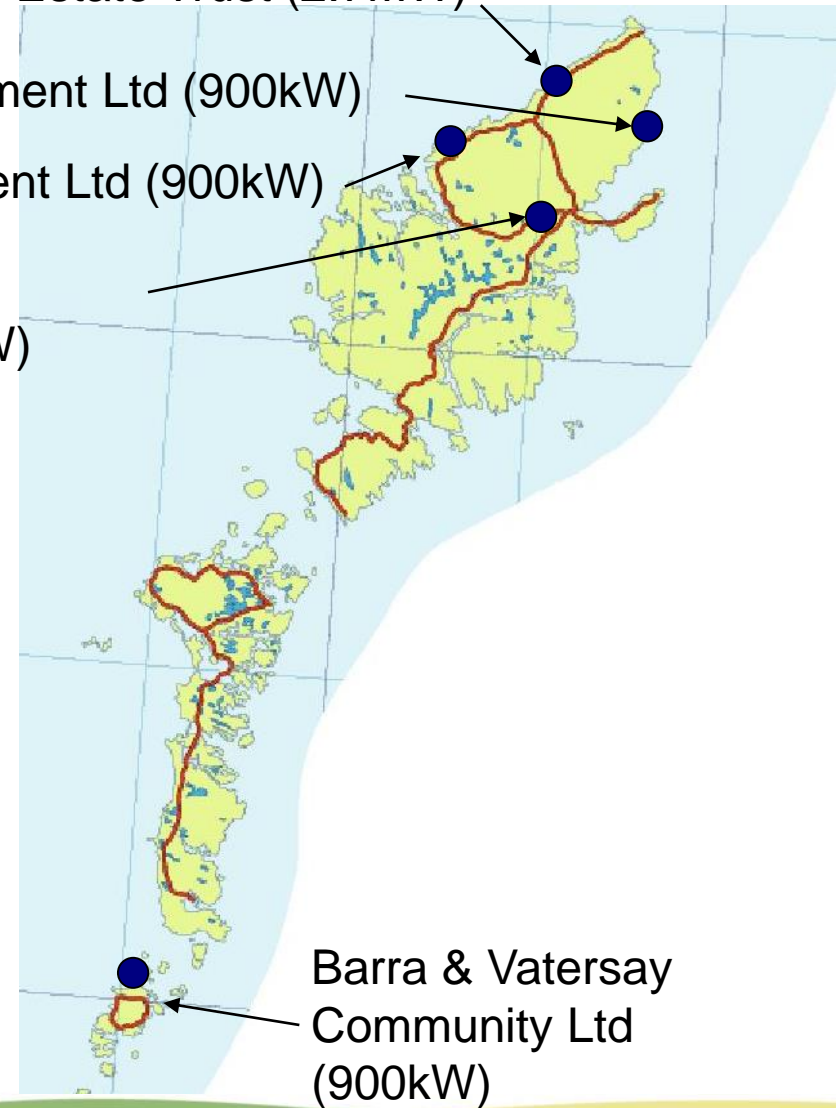


Galson Estate Trust (2.7MW)

Tolsta Community Development Ltd (900kW)

Horshader Community Development Ltd (900kW)


Point and Sandwick
Development Trust (9MW)



Barra & Vatersay
Community Ltd
(900kW)

**CPOH totals 14.4MW
of community owned
wind power.**

Aims

- Shared learning and networking
 - Stronger voice regarding key issues/consultations
 - Joint working where possible
 - Training opportunities
 - Sharing of data/technical information
- 

Community Renewable Energy in Western Isles



- Grid closed to any new applicant (unless smaller than 3.6kW per phase)
- Proposed 600MW interconnector from Lewis/Harris to the mainland
- Steering group set up to look at innovative ways of getting more generation to connect prior/instead of interconnector.

Community Renewable Energy in Western Isles



- Looked at ANM but not deemed to be viable
- Looked at district heating options for Lochboisdale and Watersay
- Trying to overcome MOD issues in the Uists
- Assisting new community buyout groups to find a sustainable incomes

Next steps

- Review what options we have for innovation
- Continued support to each other and other groups through CPOH
- Move focus away from the interconnector.....
- Localised energy options

